

Riparian Reserves

August 15, 2018



MOJAVEMAX.COM



desert conservation
PROGRAM

Overview

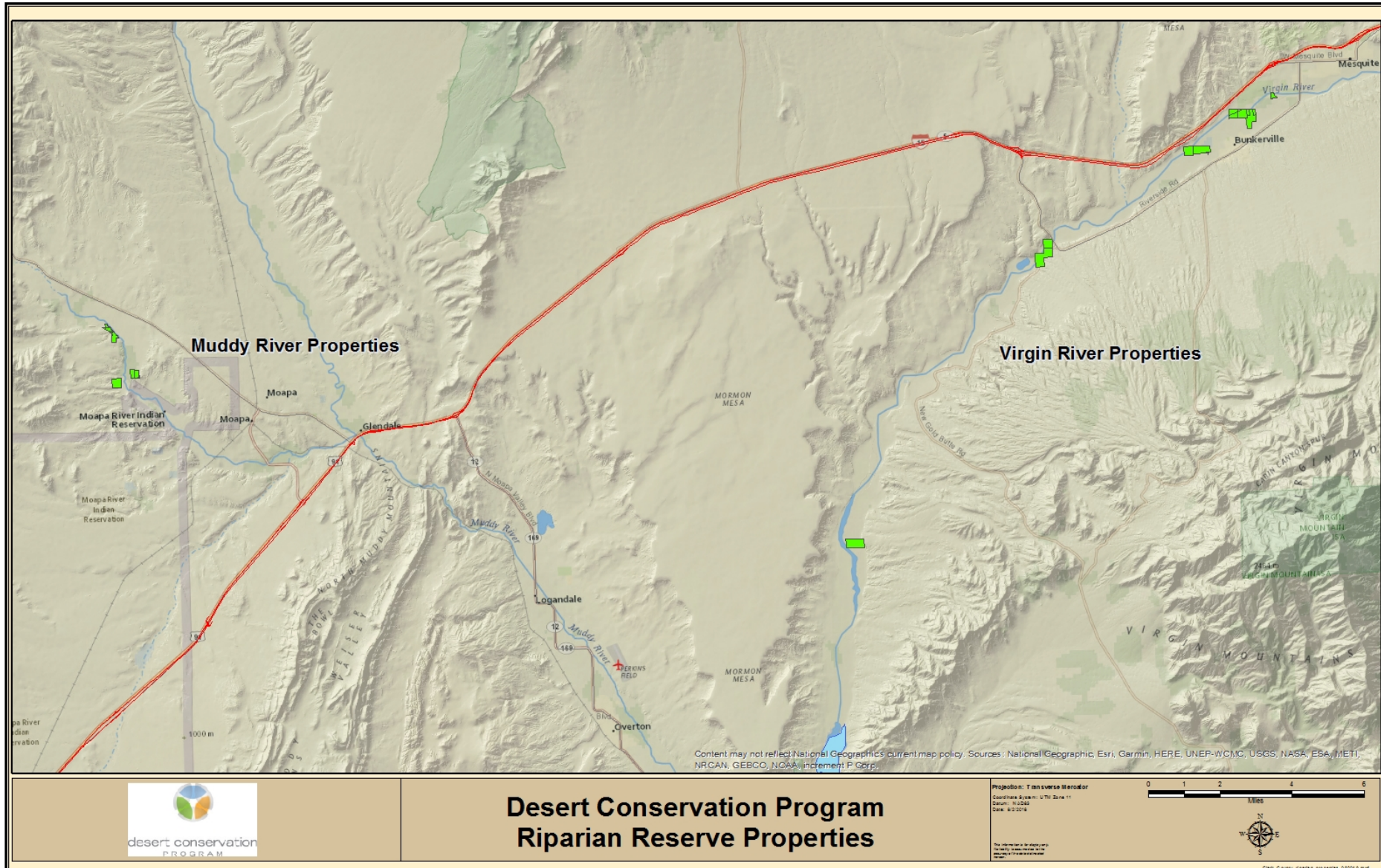


Incidental Take Permit Condition K

- Property Acquisition
- Maintenance & Management
- Restoration



Riparian Reserve Units



Property Acquisition

Acquisition Selection Criteria

Administrative Criteria

- Ease of Management
- Complexity of land acquisition process
- Potential for degradation of habitat if not purchased for conservation

Property Acquisition

Acquisition Selection Criteria

Administrative Criteria

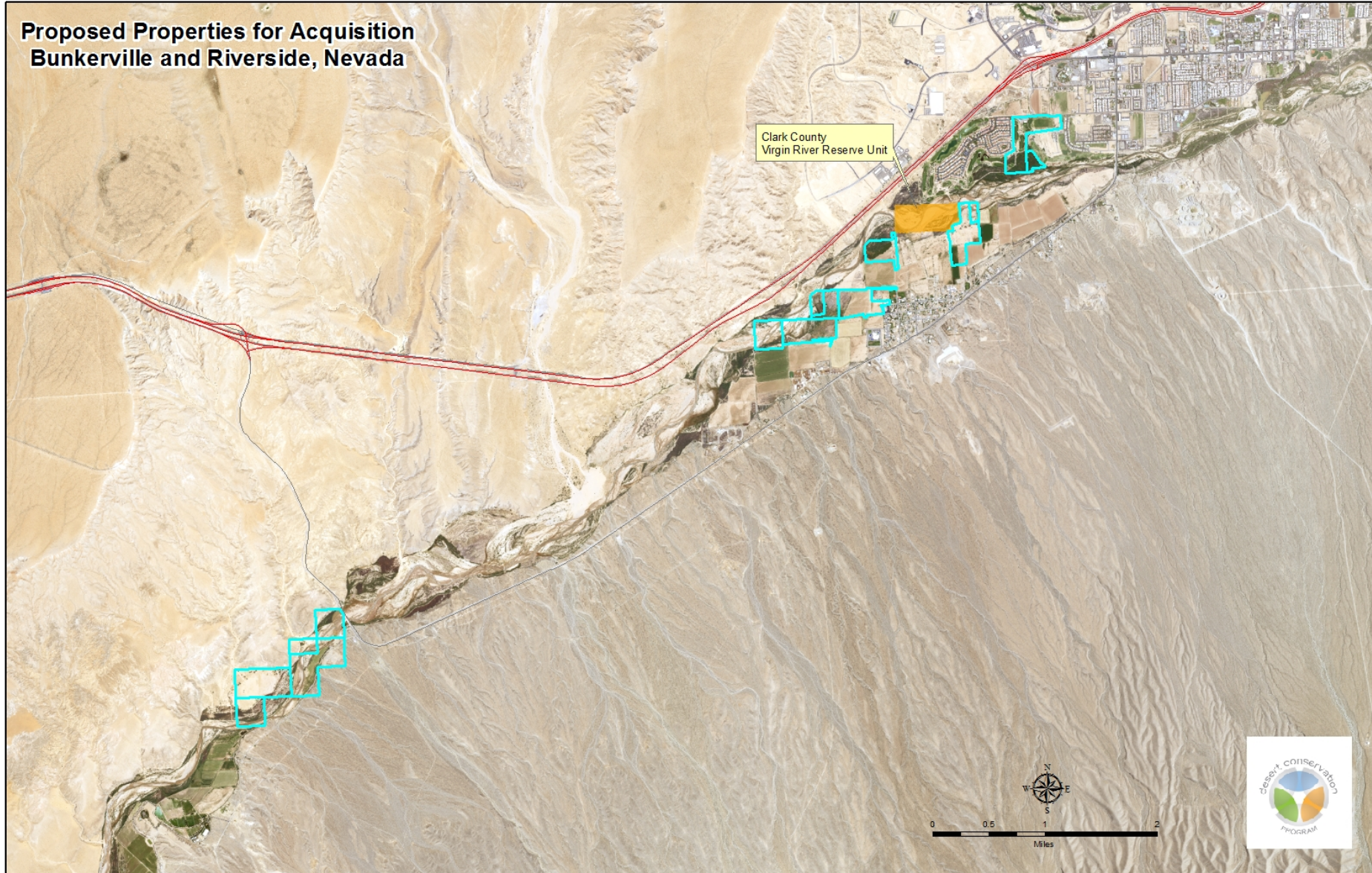
- Ease of Management
- Complexity of land acquisition process
- Potential for degradation of habitat if not purchased for conservation

Environmental Criteria

- Species Evaluation
- Proximity to sensitive lands
- Restoration Potential
- Level of disturbance

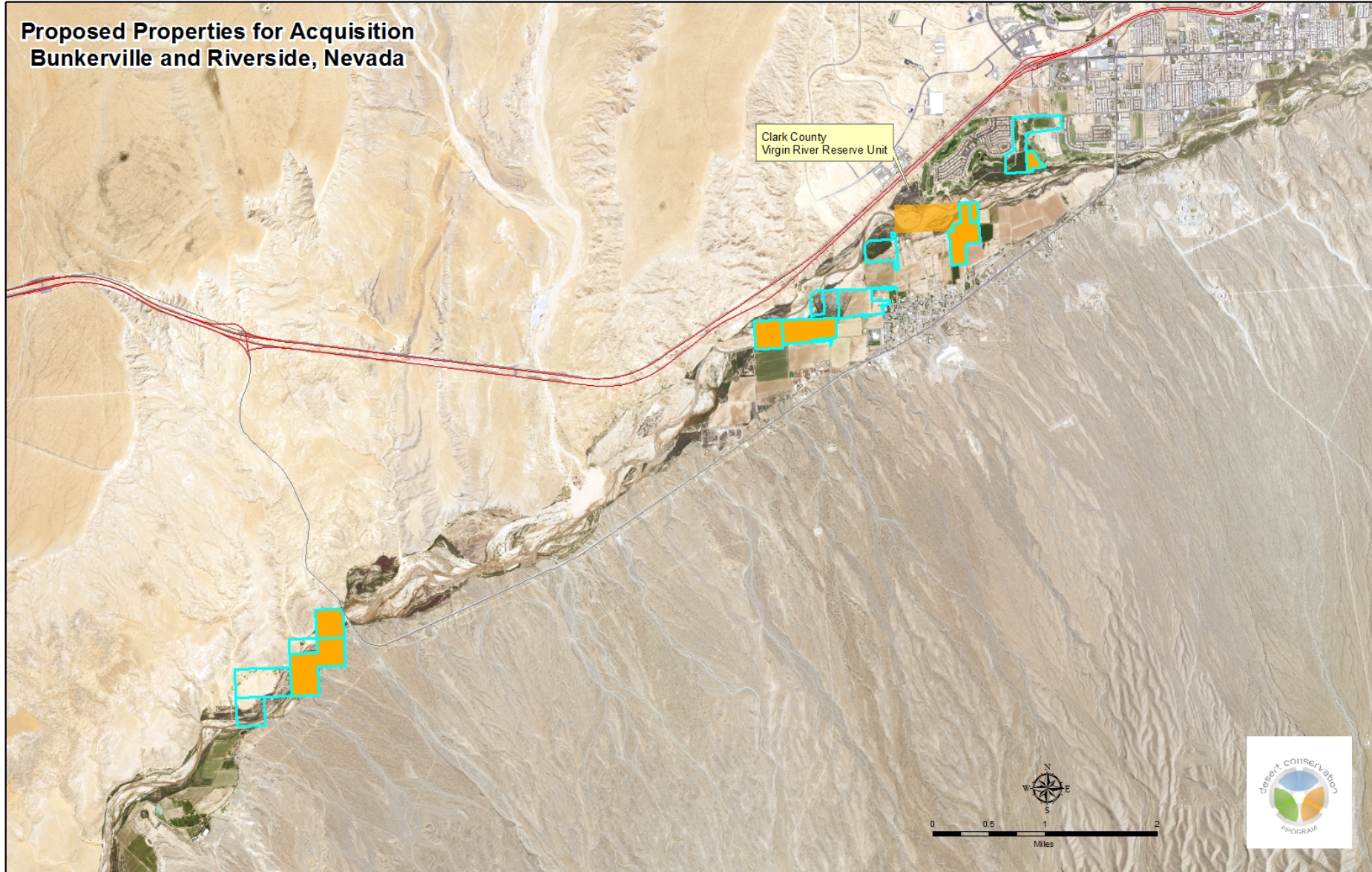
Property Acquisition

**Proposed Properties for Acquisition
Bunkerville and Riverside, Nevada**

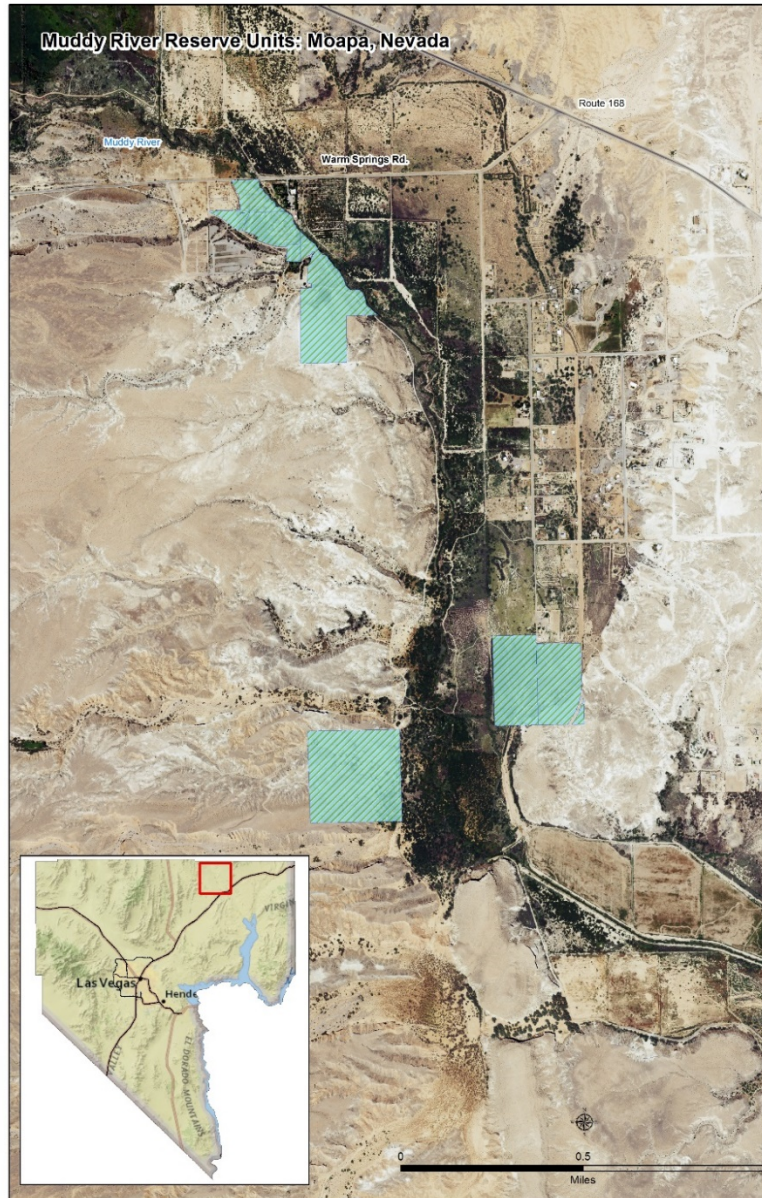


Property Acquisition

**Proposed Properties for Acquisition
Bunkerville and Riverside, Nevada**



Property Acquisition

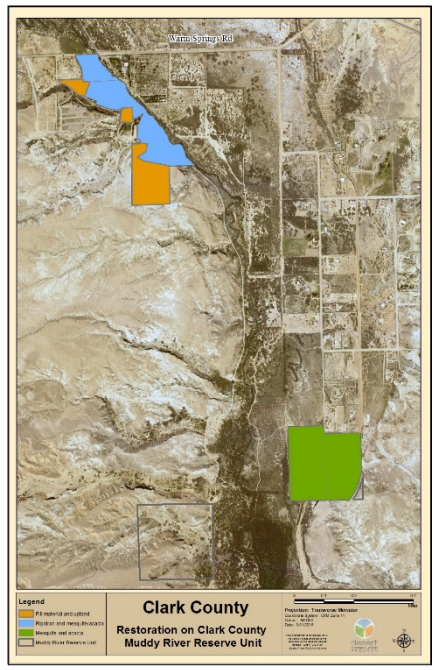


Maintenance & Management

- National Park Service Exotic Plant Management Team
- Eagle View Contractors



Restoration – Muddy River



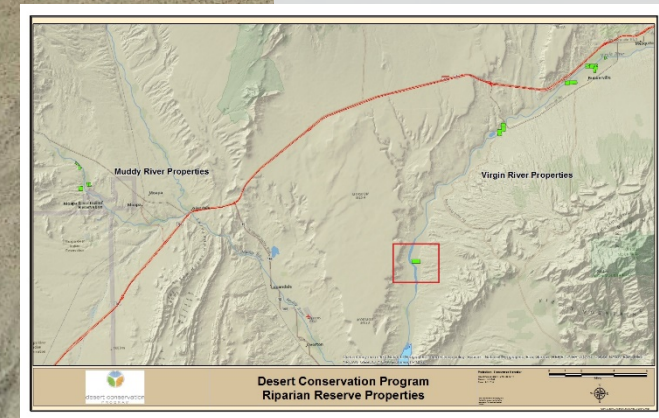
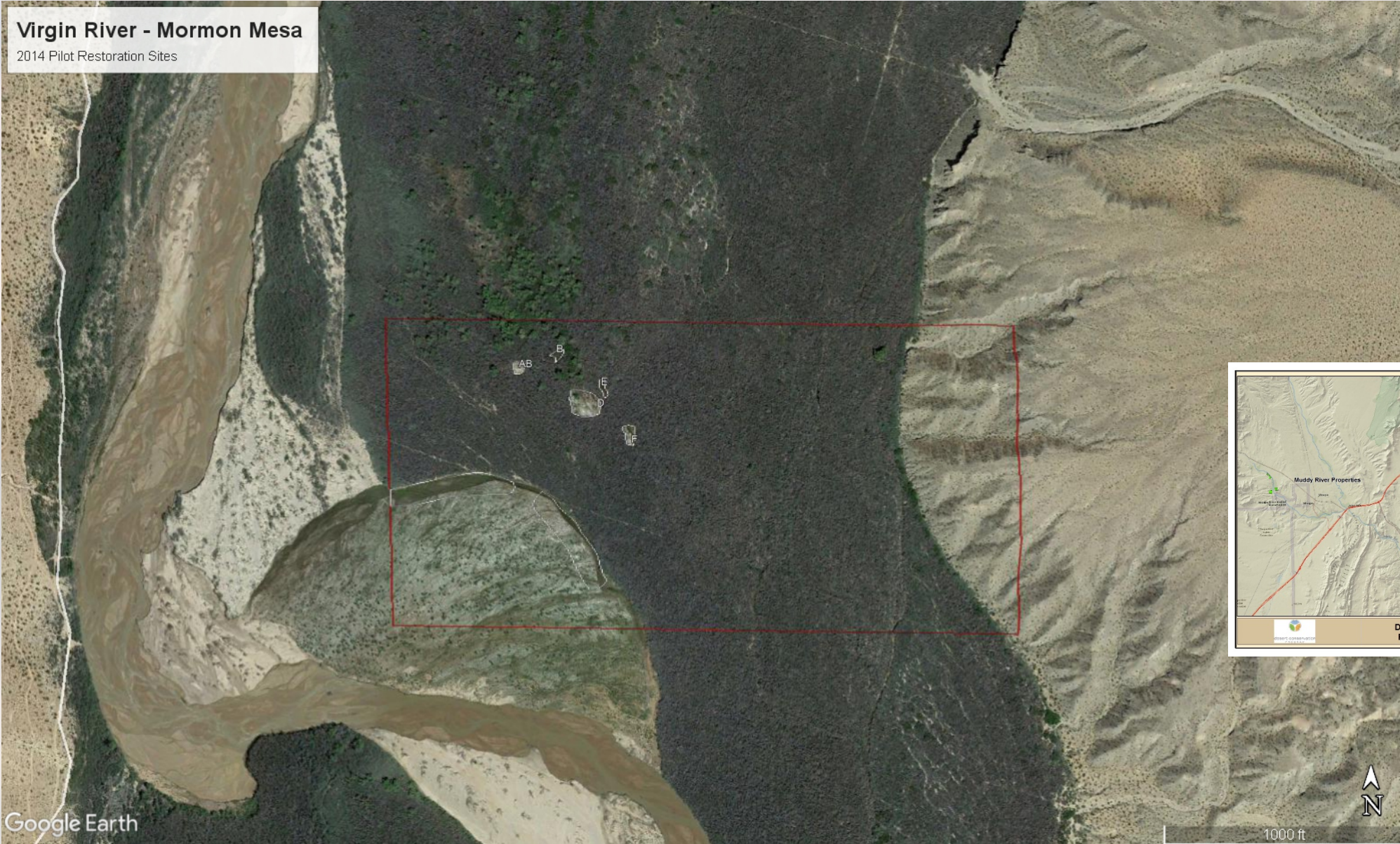
Facing southeast

Restoration – Virgin River, Mormon Mesa



Virgin River - Mormon Mesa

2014 Pilot Restoration Sites



Google Earth

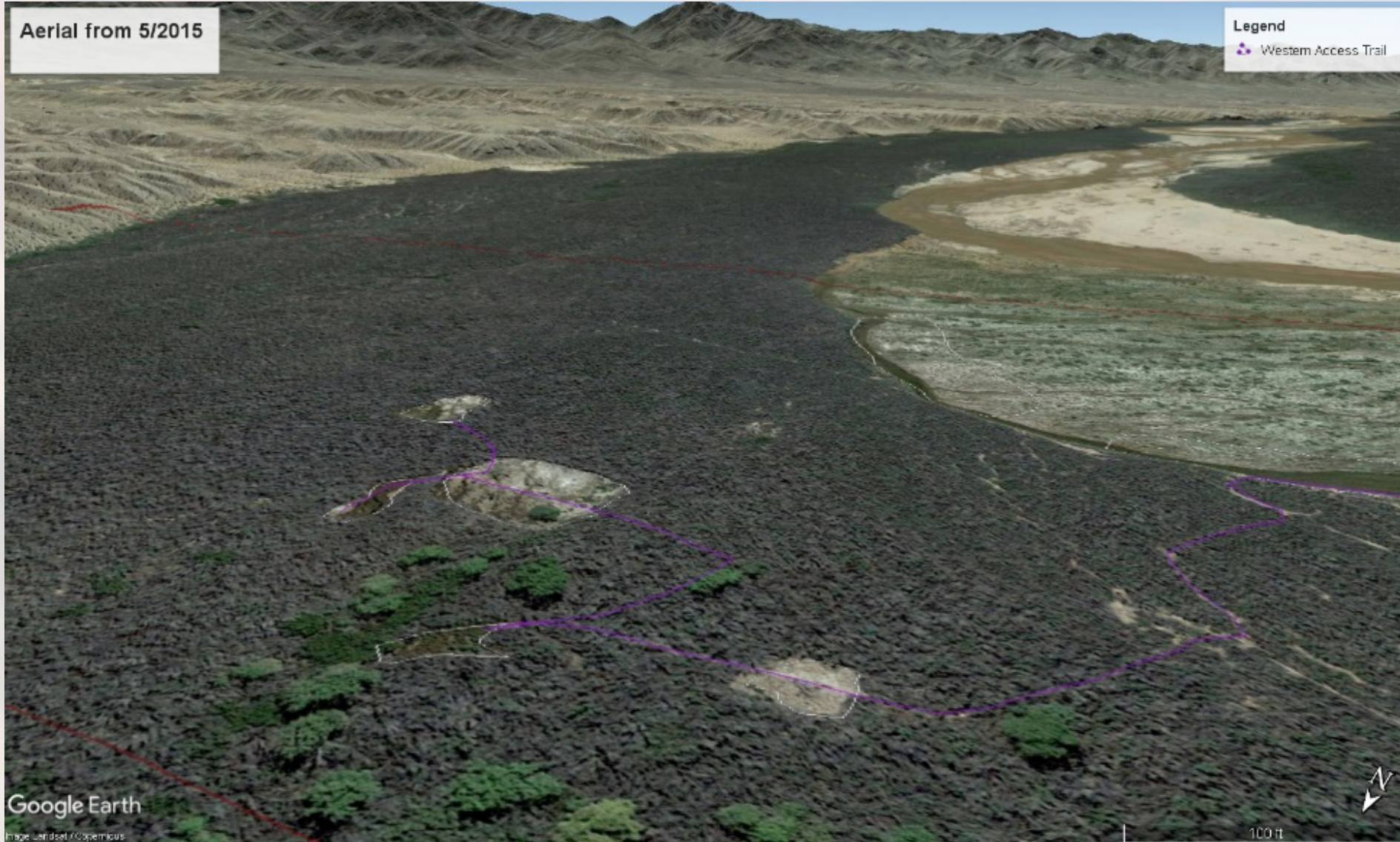
1000 ft



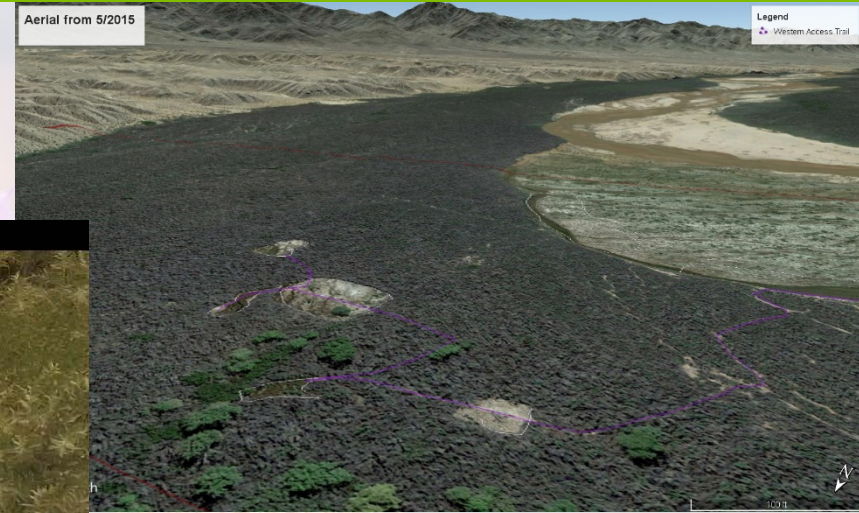
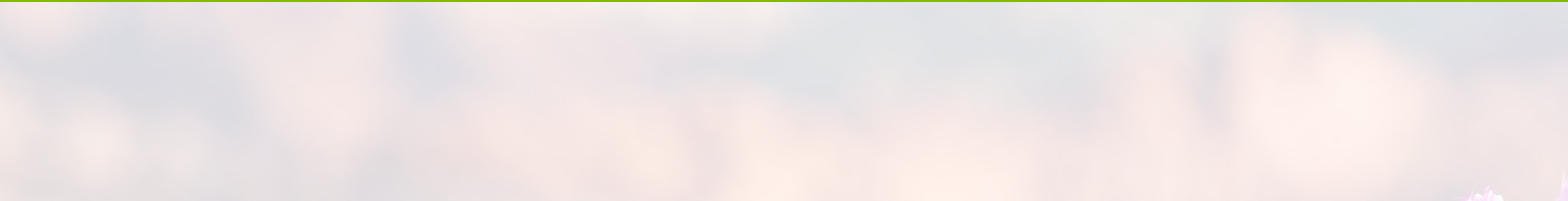
Restoration – Virgin River, Mormon Mesa



Restoration – Virgin River, Mormon Mesa



Restoration – Virgin River, Mormon Mesa



Restoration – Virgin River, Mormon Mesa



Restoration – Virgin River, Mormon Mesa



Restoration – Virgin River, Mormon Mesa



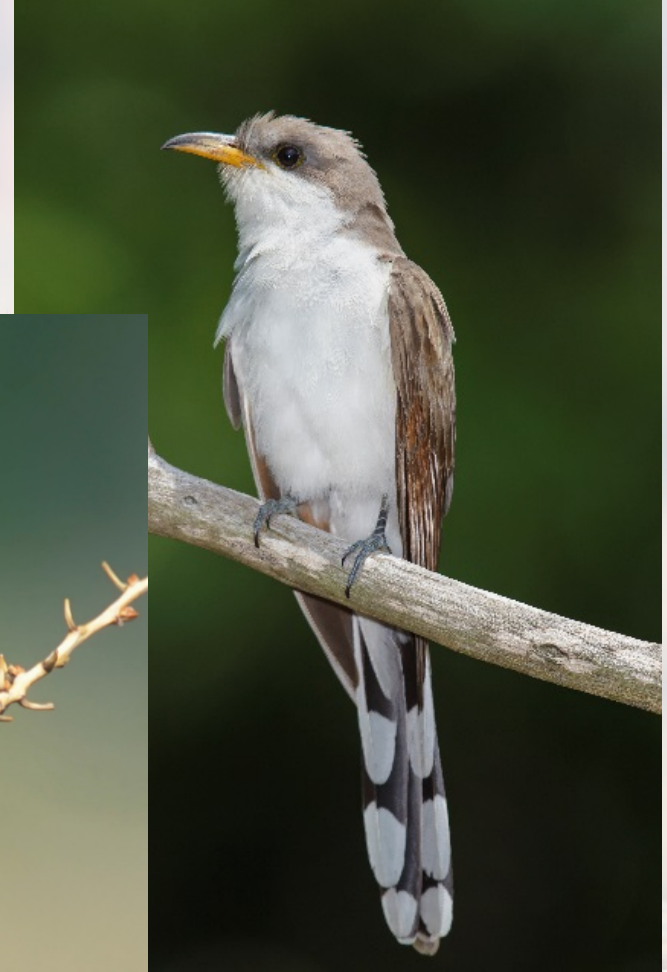
Restoration – Virgin River, Mormon Mesa



Conclusion

Other Items:

- Bird surveys





MOJAVEMAX.COM



desert conservation
PROGRAM

THANK YOU TO THE PERMITEES

